



UGA class visits: 179
(4,334 participants) +18%



PK-12 and Public Tours: 318
(7,747 participants)



Visitors: 52,967
(+27%)



Youth and family programs: 28
(2,909 participants)



Student events participants: 1,308
(+96%)



Public programs: 92
(4,141 participants) +121%



Friend + Annual Fund Member Households: 396



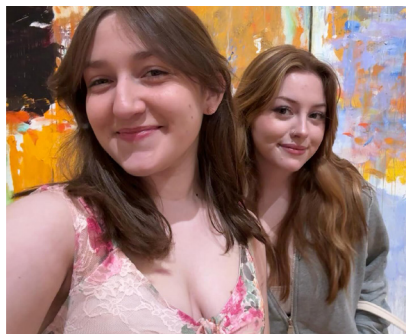
Friends of the Museum: 2,446
(+ 20%)



Works acquired: 351



Website visitors: 111,272
(+4%)



Instagram followers: 13,283
(+ 35%)



Interns/student workers: 65
(+51%)